

# Precision Nitrogen Trace

## Nitrogen Generator for GC

Part Number : See Reverse

Service Kit : 08-3613

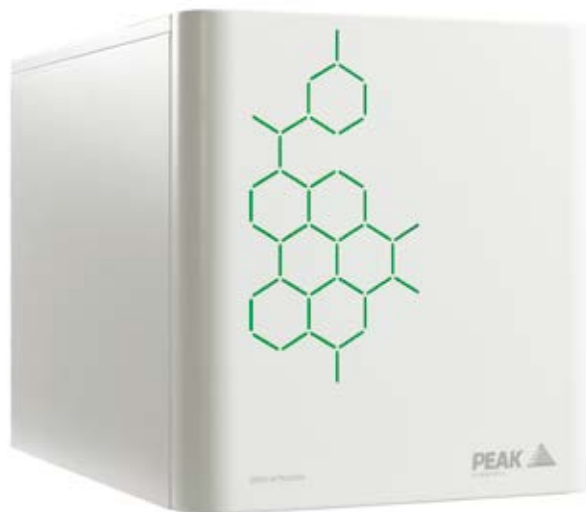
**PEAK**   
SCIENTIFIC

Your local **gas generation** partner

### Description

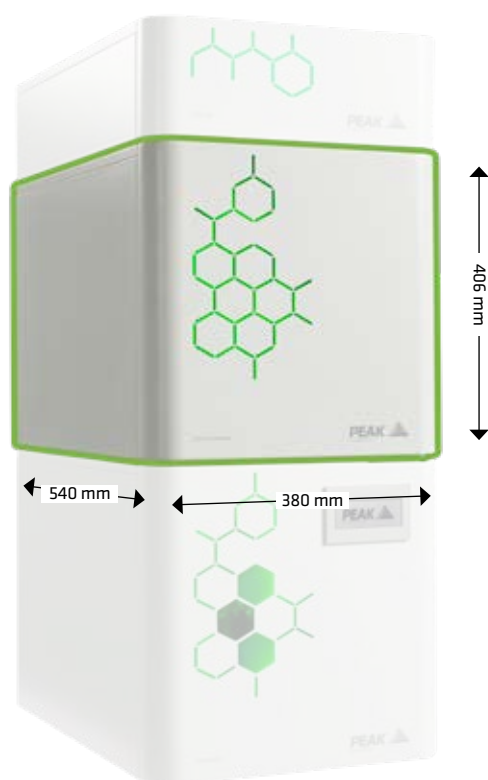
Precision Nitrogen Trace has been developed to provide a constant and consistent source of zero nitrogen for carrier and detector gas for GC applications. These generators are capable of delivering ultra high purity nitrogen, removing oxygen and moisture via Pressure Swing Adsorption technology, as well as removing hydrocarbons by means of catalytic oxidation to ensure maximum purity output.

As with all Precision Series generators, Nitrogen Trace models benefit from a compact and modular, stackable design, minimizing the total footprint required for GC gas supply, and providing flexibility to add or remove modules as your laboratory requirements evolve over time.



### Applications

- ▶ Sample Prep
  - Headspace
  - Purge and Trap
  - Tube Conditioning
- ▶ Carrier Gas
  - GC
- ▶ Detector Gas
  - Make-up / Reference



Precision Nitrogen Trace shown in a typical Precision stack.

### Key Features

- ▶ Suitable for carrier gas and detector gas
- ▶ Generates zero nitrogen on demand from compressed air
- ▶ Regenerative CMS columns remove oxygen and moisture
- ▶ Catalyst chamber to remove hydrocarbons (as methane) to market-leading purity of <math><0.05\text{ppm}</math>
- ▶ Ultra-fast start-up time, quick to reach standard operating purity
- ▶ Minimum maintenance with an annual filter change
- ▶ Compact, space-saving modular design

**PEAK**   
SCIENTIFIC

Technical Specifications	Nitrogen Trace, 250cc	Nitrogen Trace, 600cc	Nitrogen Trace, 1000cc
Max Flow Rate	250cc/min	600cc/min	1000cc/min
Max Pressure	80 psi / 5.5 bar		
Purity	>99.9995%		
Hydrocarbon Content	<0.05 ppm		
Gas Outlets	1 x 1/4" BSPP		
Min/Max Air Inlet Pressure	120-145 psi / 8.3-10 bar		
Min Air Inlet Flow	18 lpm	22 lpm	
Min Inlet Air Quality	ISO8573 - 1:2010 Class 1.4.1		
Phthalates	None		
Suspended Liquids	None		
Start-Up Time For Purity	1.5 Hours		
Operating Temperature	5°C - 35°C / 41°F - 95°F		
Electrical Requirements	110VAC ± 10%/60 Hz/4.4A or 230VAC ± 10%/50 Hz/2.1A		
Power Consumption	484 Watts		
Heat Output	up to 1650 BTU/Hr		
Generator Dimensions (WxDxH)	380 x 540 x 406mm / 14.9 x 21.2 x 15.9"		
Generator Weight	38 Kg / 83.6 lbs		
Noise Level	Silent in operation		

Ordering Information	110V	230V	110V	230V	110V	230V
Part Number	62-0251	62-0250	62-0601	62-0600	62-1001	62-1000
Annual Service	www.peakscientific.com/ordering					
Standard Maintenance Plan						
Complete Maintenance Plan						

Precision Air Compressor	110v	230v	Annual Service Kit
Part Number	65-1555	65-0555	08-8372

## [PEAK Protected]™

Peak Scientific gas generators define the benchmark in reliability, convenience and performance in laboratories around the world, and come backed by a 12 month warranty. Beyond this period however you can ensure that your investment continues to be **[Protected]** by our comprehensive generator care cover.

Our world-class aftercare support packages deliver a program of scheduled preventative maintenance whilst giving you the reassurance of instant access to worldwide technical support and priority on-site response in the untimely event of a breakdown.

Peak Scientific UK  
Tel: +44 (0)141 812 8100  
Fax: +44 (0)141 812 8200

Peak Scientific North America  
Tel: +1 866 647 1649  
Fax: +1 978 608 9503

For a full list of our worldwide office locations, please visit:

Web: [www.peakscientific.com](http://www.peakscientific.com)  
Email: [discover@peakscientific.com](mailto:discover@peakscientific.com)

Peak Scientific's Quality Management System conforms to: ISO:9001:2008



### Product Certifications

